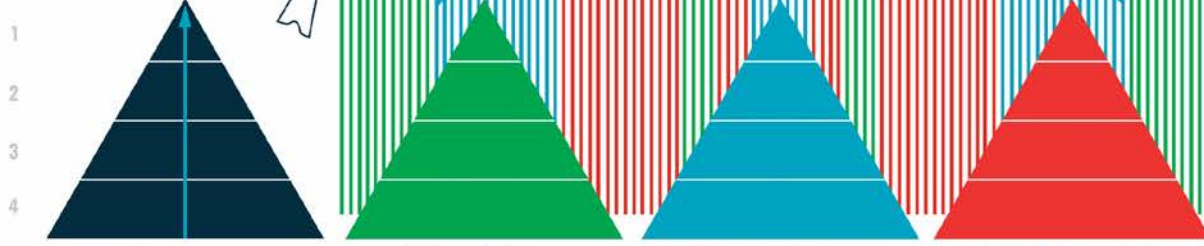
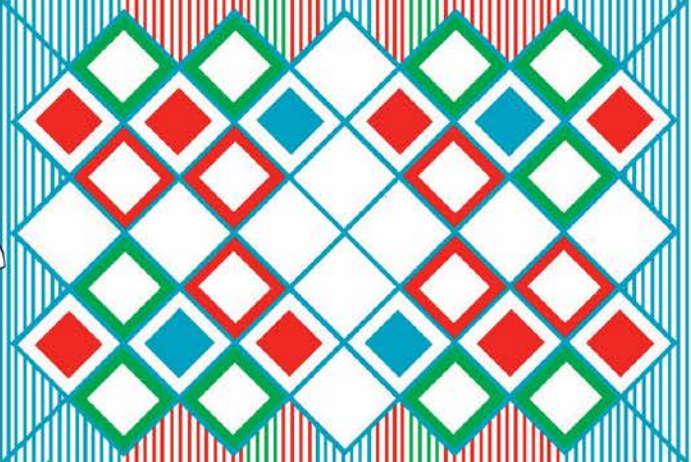
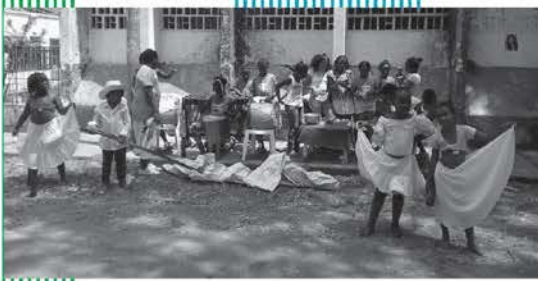
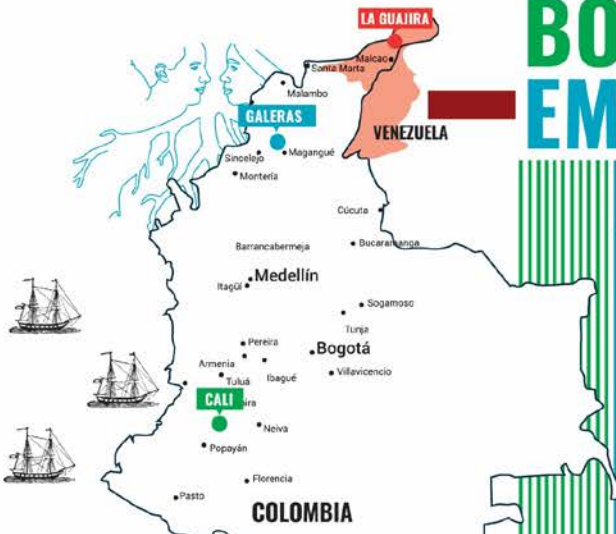


MUSEUM BODIES FOR EMPATHY

HOW DO DANCE AND HERITAGE FOSTER RECONCILIATION IN COLOMBIA?



	MUSEUM BODIES FOR EMPATHY	MULTIPLE LAYERS OF CONFLICT	MULTIPLE LAYERS OF PEACE	MULTIPLE LAYERS OF DANCE AND HERITAGE
DIPLOMATIC:	1 Makes visible the narratives of the communities	Civil Armies against State Army.	Transitory phase for peace after Peace Agreement	Impacts in the revisión of the narratives of the nation.
COMMUNITY:	2 Supports local initiatives working with dance and heritage.	Constant reconfiguration of communities.	Building spaces for resistance and encounter.	Serves as a space for reflection, encounter and resistance.
INTERCULTURAL:	3 Connects cultural groups and sectors of the society.	Homogenizing, stereotyped discourses about diversity	Revisión of concepts about interculturality.	Takes part in an education for interculturality.
BODIES:	4 Explored the possibility to create peace from the bodies.	Violence, trauma, distrust, defensiveness	Empathy, trust, availability.	Brings attention to perception, expression and interaction.

MUSEUM BODIES FOR EMPATHY IN CALI: DANCING IN ALIENATION



Open and exposed space. Permeated by the vulnerable dynamics of the community.



MUSIC AND DANCE FROM THE PACIFIC PLAY & CREATIVITY

Generation of a platform for an alternative relationality through movement, self-awareness and creativity.



Building alternative images and narratives about ourselves



BODY OF THE RESEARCHER

- Insufficient without institutional backup.
- Tackled the reconfiguration of the community.
- Showed exhaustion from holding a space without community organization support.



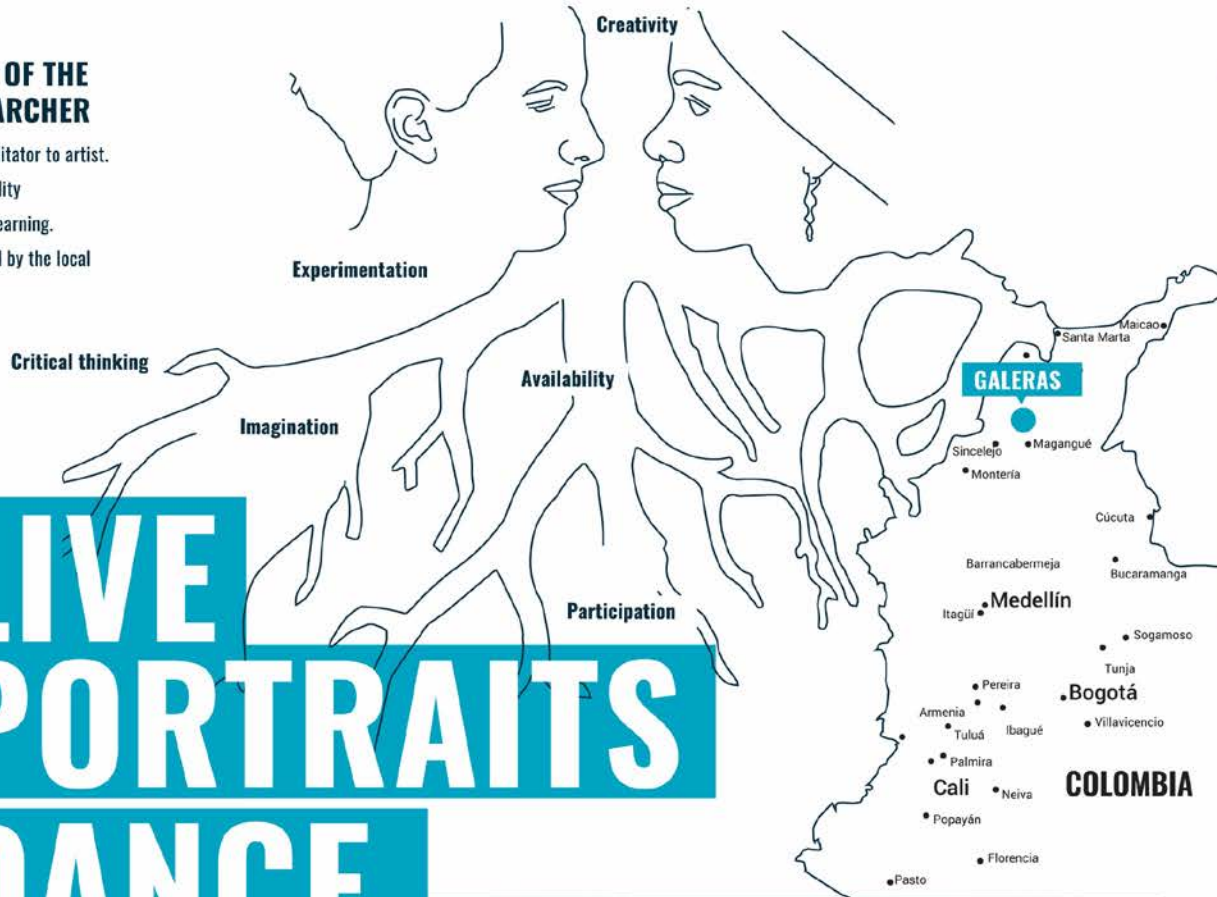
BODY OF THE RESEARCHER

From facilitator to artist.

Horizontality

Circular learning.

Supported by the local process.



LIVE PORTRAITS

DANCE

VIDEO

SOUND



Who tells our story?

MUSEUM BODIES FOR EMPATHY IN GALERAS:

GATHERING FRUITS OF EDUCATION THROUGH ARTS



Enriching the imagination and dialoguing with their local practices.

A conflicted territory turned into artistic territory. Existing empathy and strong community bonds.

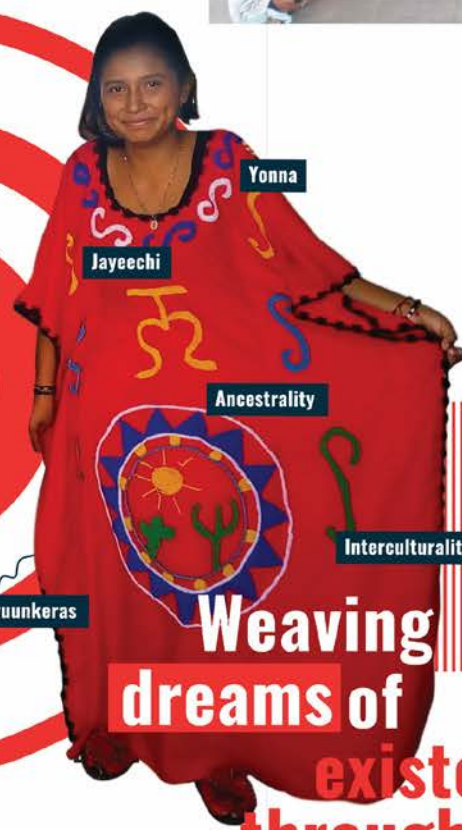
MUSEUM BODIES FOR EMPATHY IN LA GUAJIRA: HABITING WAYUÚ BORDERS



Cultural exchanges for the safeguarding of Wayuú culture.



Play, empathy, dance and music marked by the Wayuú practices and cosmovisions.



Weaving dreams of existence through our local practices

- BODY OF THE RESEARCHER**
- Arijuna
 - Feeling a foreigner.
 - Approaching an education for interculturality.
 - Supporting local leaders.